

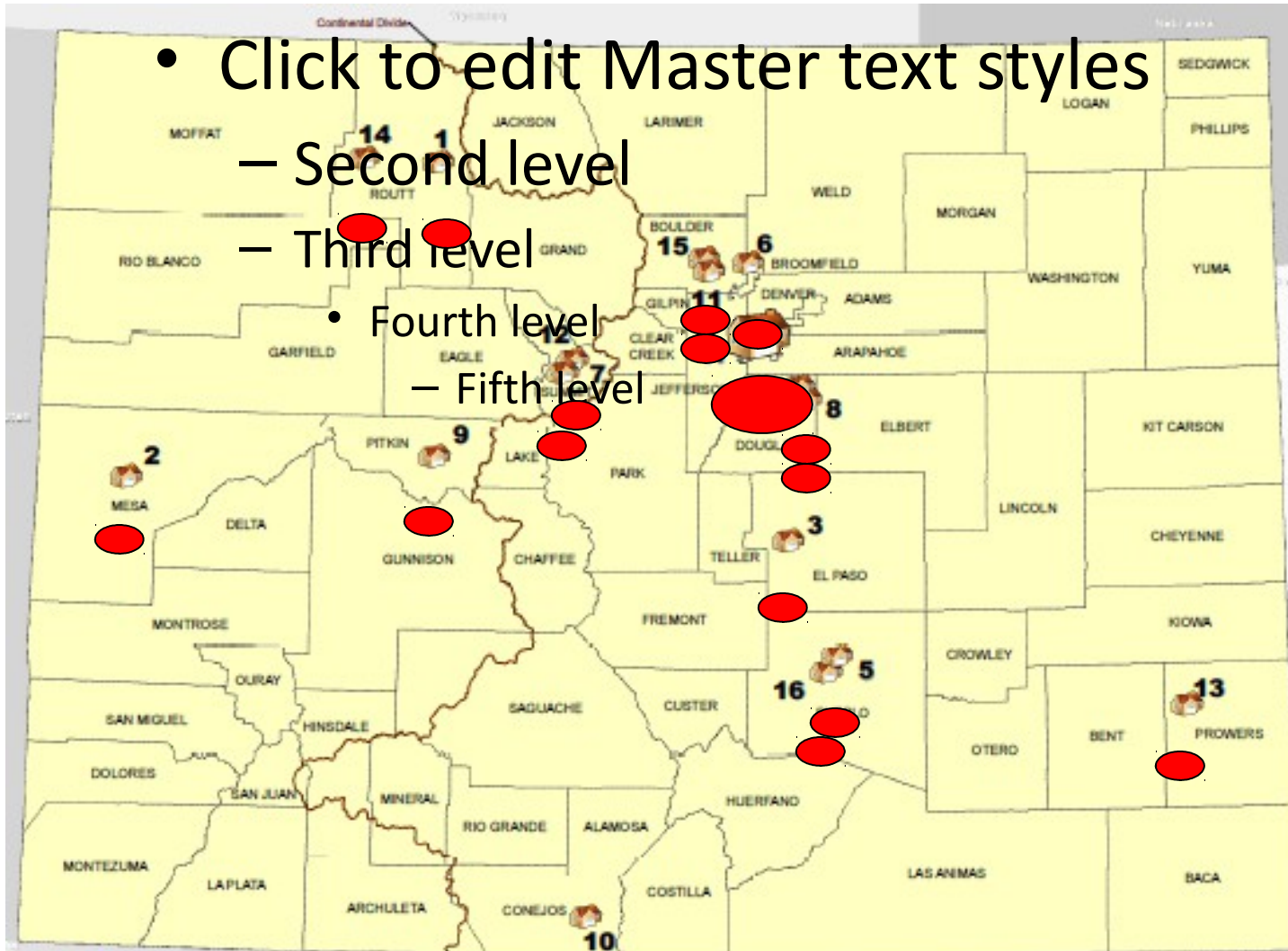
**Department of Local Affairs
(DOLA)
*“Strengthening Communities”***

**Colorado Watershed Assembly
October 9, 2012**

Ingredients for a Healthy Community:

1) A Culture of Collaboration

State Government that represents the diversity of our great state.



- Click to edit Master text styles
 - Second level
 - Third level
 - Fourth level
 - Fifth level

**Government that doesn't
view public policy problems
through a partisan lens.**



Democrat Pothole



Republican Pothole

Potholes is Potholes and they need to be fixed!

Ingredients for a Healthy Community:

2) An Economic Gameplan

The State's role is important, but limited.

- **The State's role is NOT to “create jobs”, but rather to create an environment for the PRIVATE sector to be competitive and prosper.**
- **Provide Economic Incentives**
- **Reduce the Regulatory Burden**
- **Provide a Statewide Gameplan ... preferably driven by the local communities.**

Ingredients for a Healthy Community:

3) An Engaged Public

“Community” 101

- **Successful communities are more about shared VISION and shared VALUES than shared zip codes.**
- **The most valuable asset that any community has is its PEOPLE, and their ability to collaborate on their shared vision and values.**
- ***“Where there is no vision, the people perish.” (Prov 29:18)***

DOLA's Mission and Added Value

Strengthening communities and enhancing livability

- 1. Equitable & consistent implementation of property tax laws**
- 2. Emergency preparation, prevention, response and recovery**
- 3. Safe affordable housing**
- 4. Community development that is revitalizing and sustainable**
- 5. Technical & financial support for community needs**

Technical Assistance

1. Strategic Planning/Capital Improvement/Infrastructure
2. Budget/Finance Management
3. Land Use/Environmental Planning
4. Economic Development
5. Personnel and Human Resource planning
6. Elections
7. Housing
8. Emergency Management
9. Property Tax
0. General Administration
1. Statutory Compliance



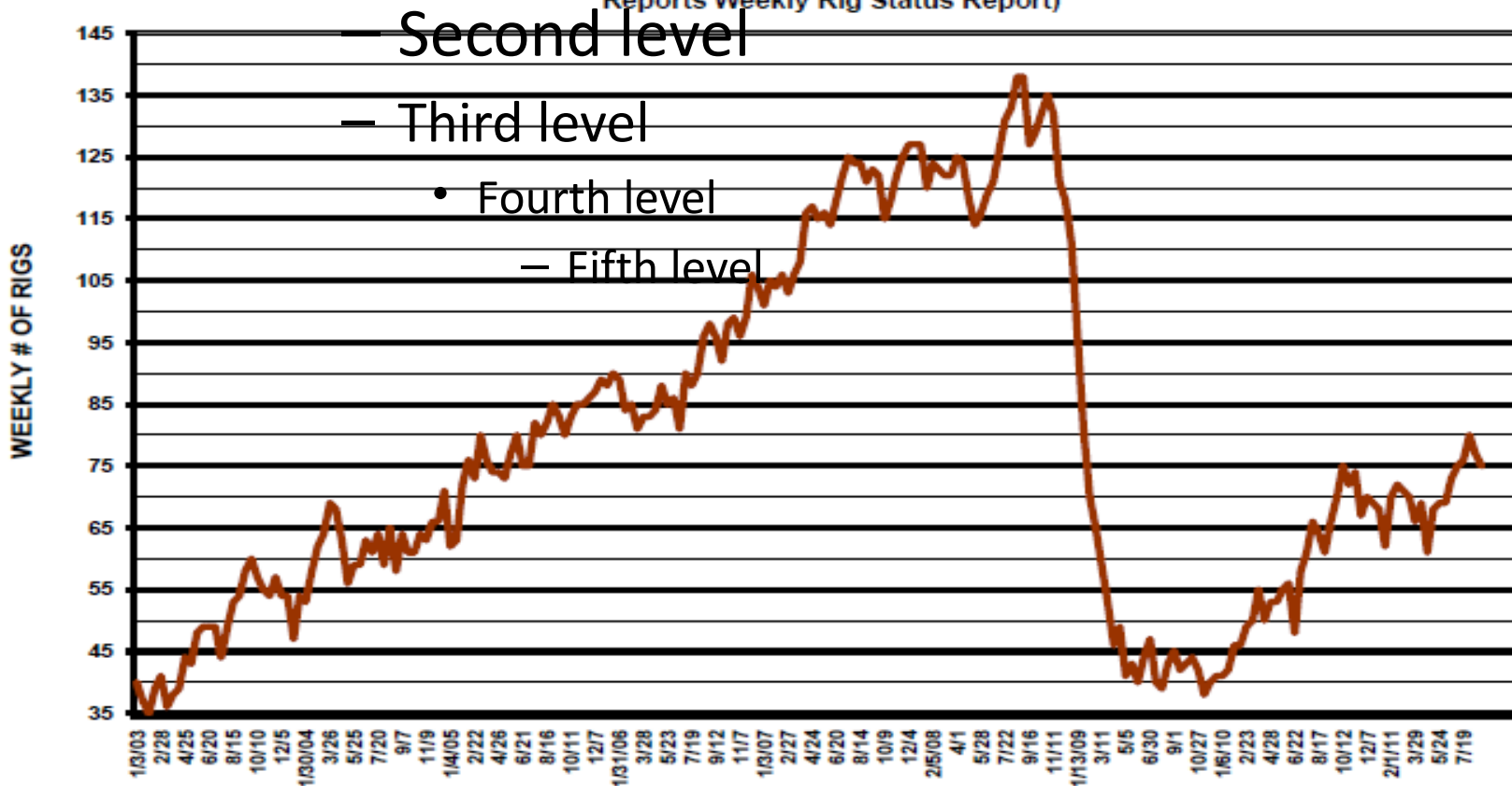
Energy Impact Fund 101

- **The Energy & Mineral Impact Assistance Fund (EIAF) is intended to “*assist political subdivisions that are socially and/or economically impacted by the development, processing, or energy conversion of minerals and mineral fuels*”.**
- **The Fund is collected from two sources: Severance Taxes and Federal Mineral Lease Revenues.**

More Drilling Activity = More Energy Production

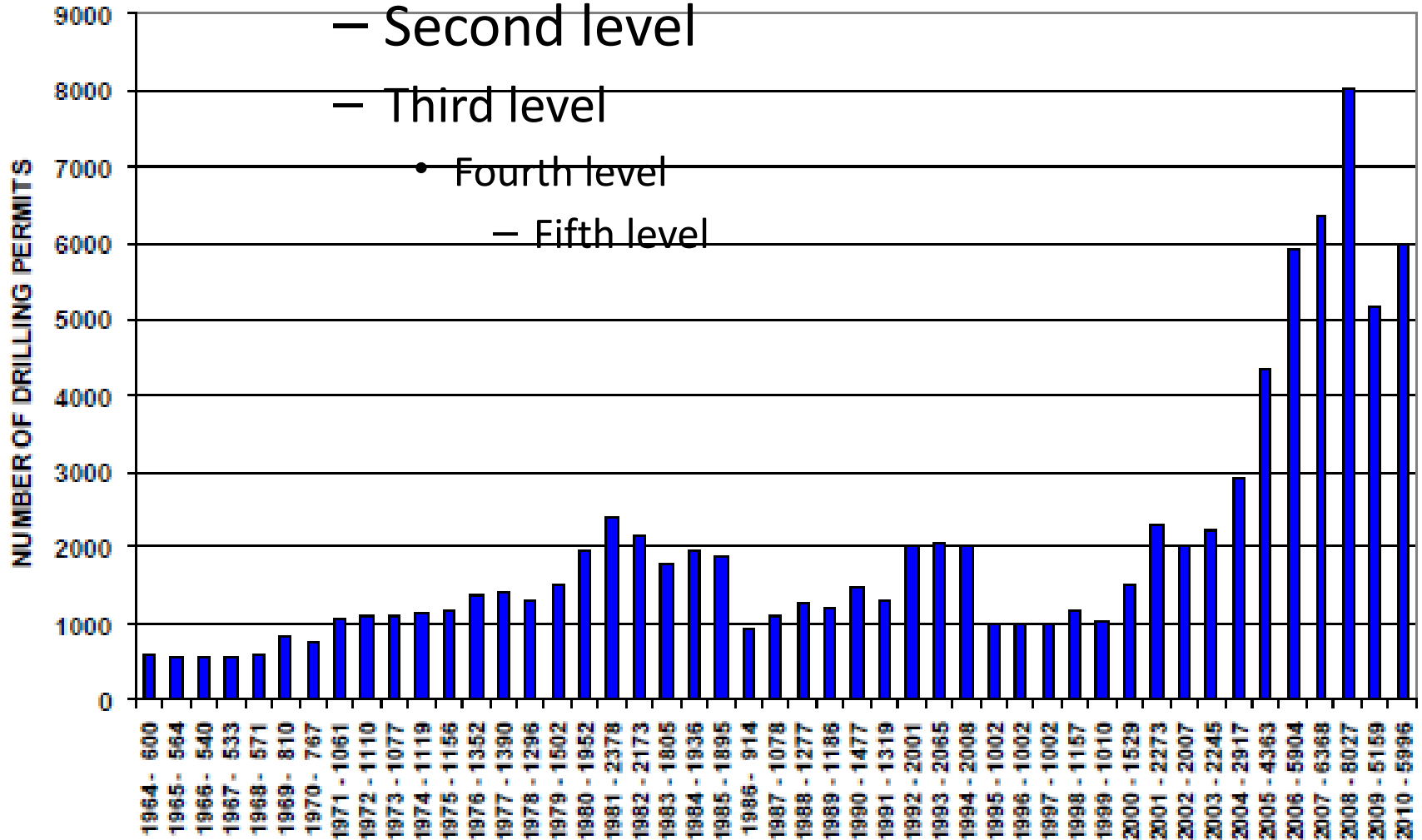
- Click to edit Master text styles

TOTAL DRILLING RIGS RUNNING
IN OIL FIELDS EVERYWHERE WEEK ENDING 1/1/11
(Based on Data in: through 4/30/03, PI/Dwights Drilling Wire -- after 4/30/03, Anderson Reports Weekly Rig Status Report)

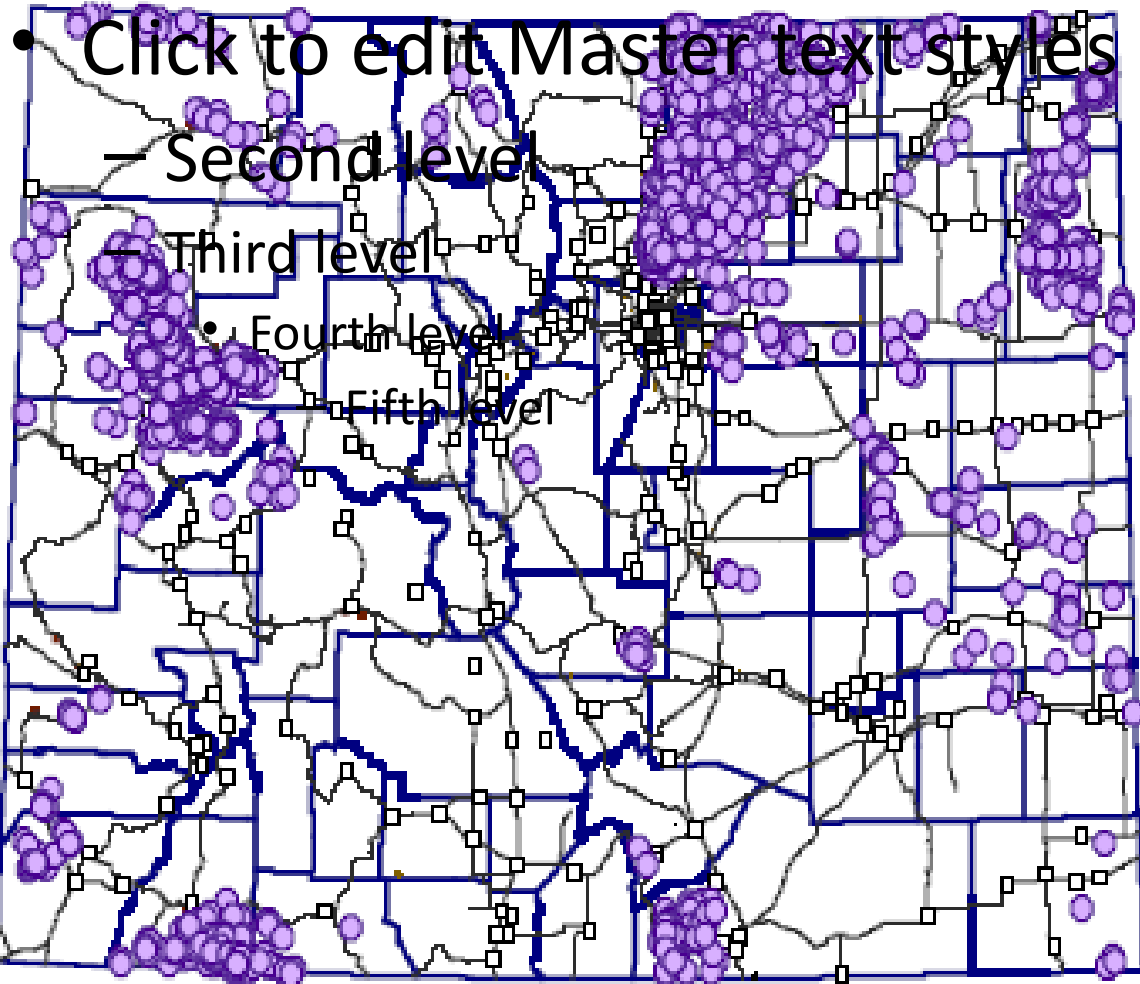


- Click to edit Master text styles

HISTORIC ANNUAL COLORADO DRILLING PERMITS 09-07-11



Recent Colorado Oil & Gas Well Permits (9/7/11)



Ingredients for a Healthy Community:

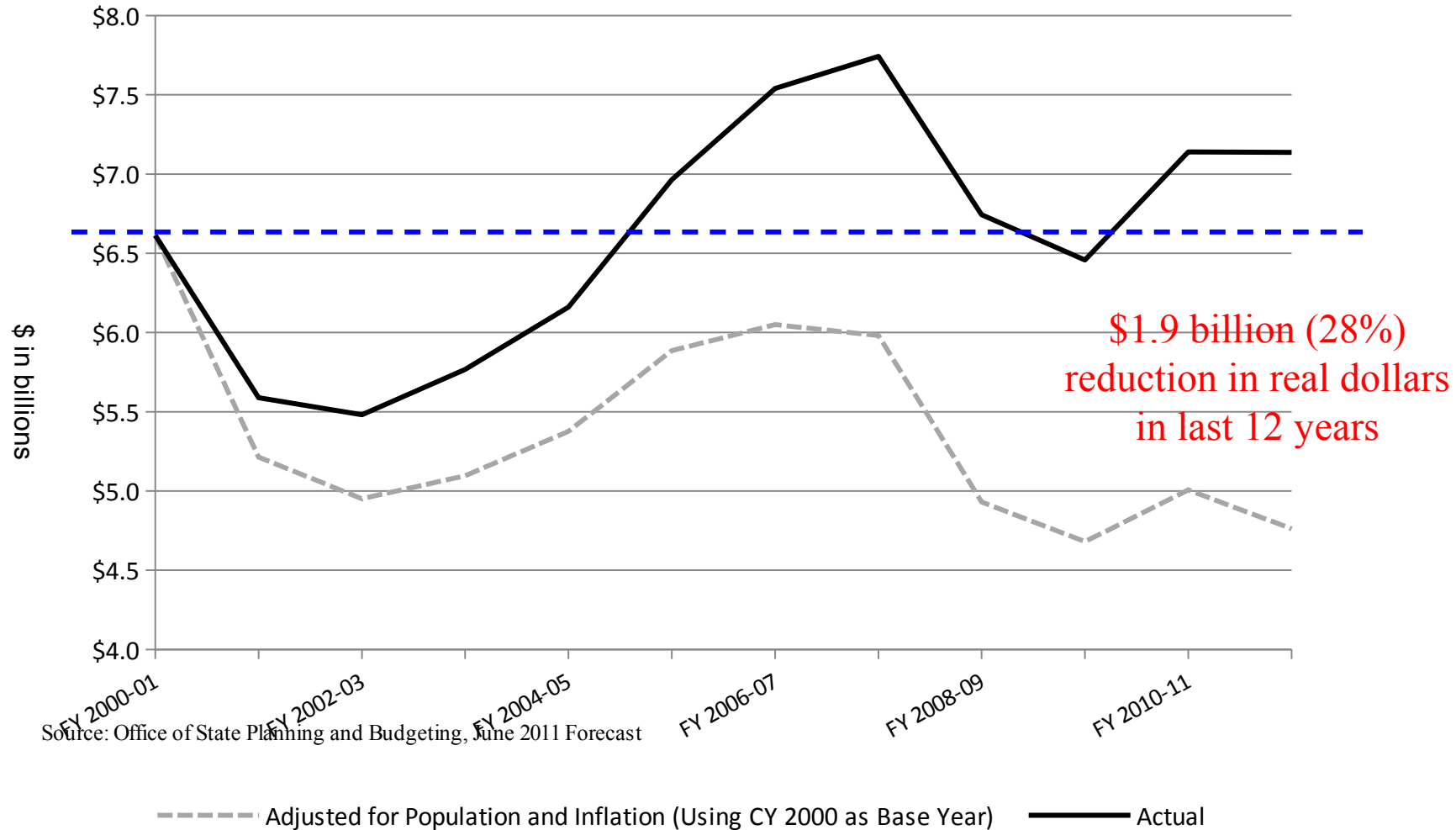
4) Sustainable Public Policy Infrastructure

State Budget 101

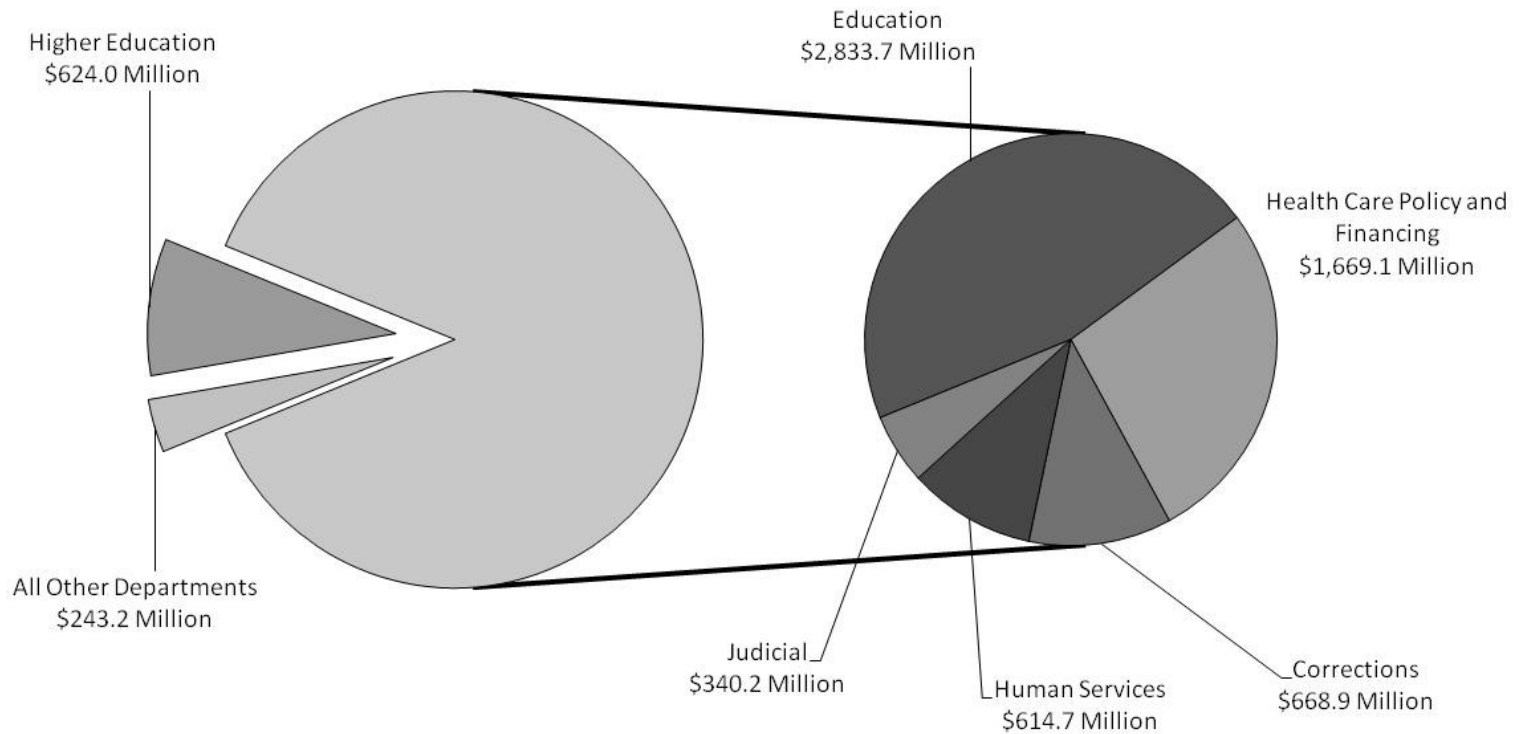
- **Amendments to the state's constitution over the last 25 years have created a "structural deficit" that prevents the state from being able to meet spending needs to meet the citizens expectations.**
- **Because our constitution requires us to balance our budget every year (that's a GOOD thing!), the state must make significant cuts in discretionary program spending and transfer other cash funds – such as Energy Impact funds - to the General Fund.**

General Fund Revenue, FY 2000-01 to FY 2011-12

Actual and Adjusted for Population and Inflation



FY 2011-12 General Fund Appropriations \$7,013.8 Million



SUMMARY

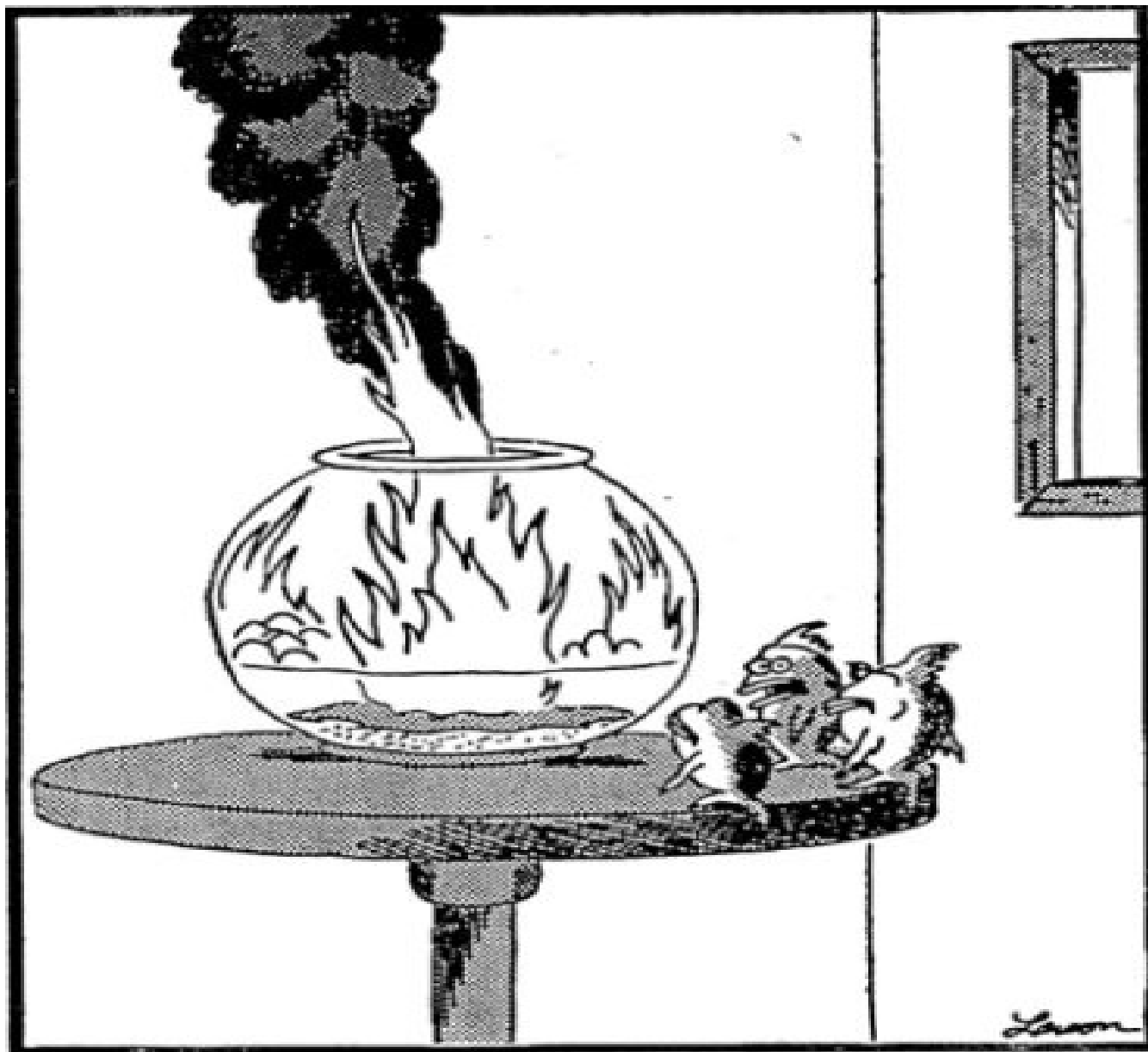
Ingredients for a Resilient Economy

- 1) A Culture of Collaboration**
- 2) An Economic Gameplan**
- 3) An Engaged Public**
- 4) Sustainable Public Policy Infrastructure**

Reeves' Lessons for Building Community

LESSON #1:
**Birds don't poop in their
own nest.**

People inherently WANT “Community”...



**"Well, thank God we all made it out in time.
... 'Course, now we're equally screwed."**

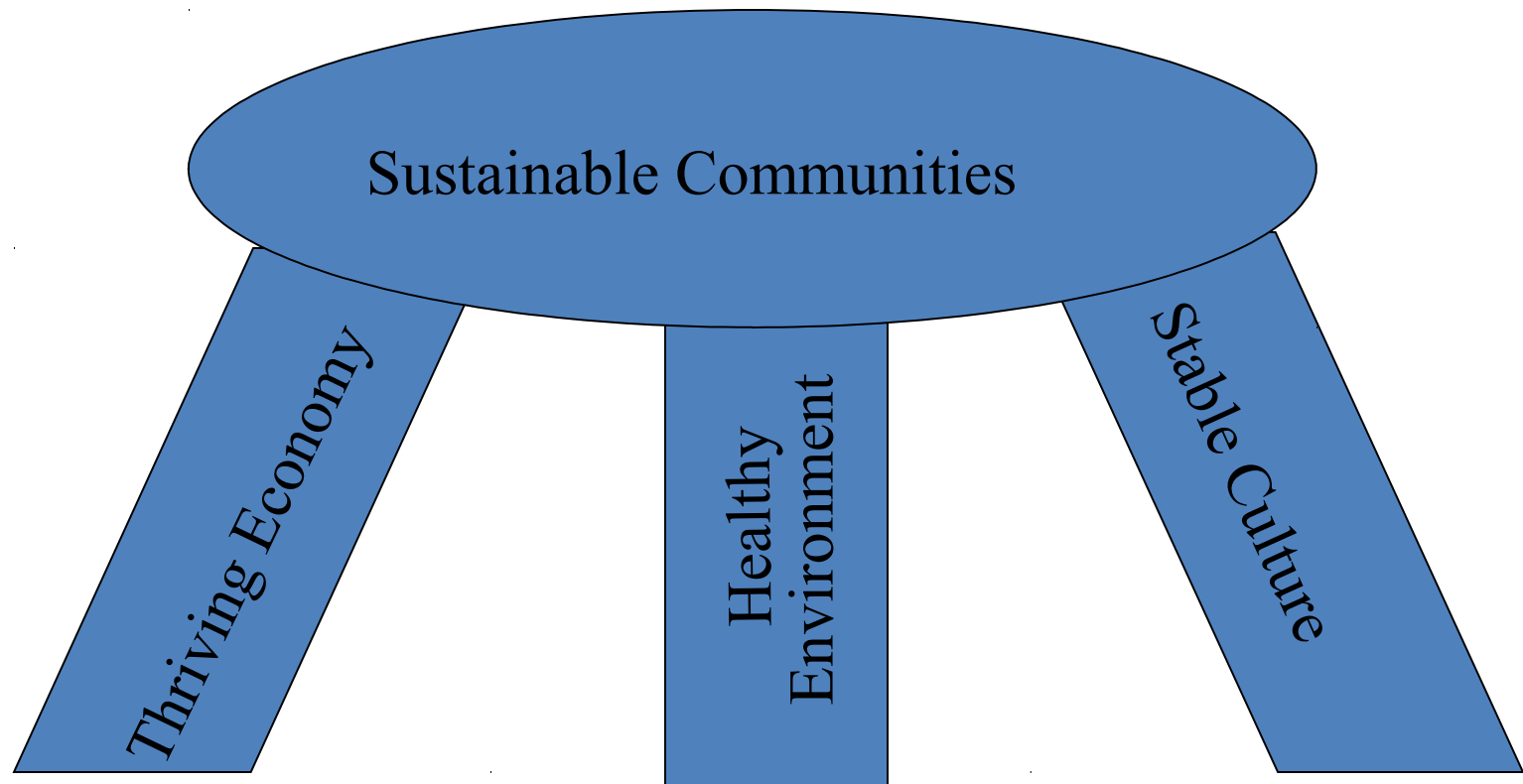
“Community” can’t happen without Communication

EVERYONE benefits when we commit ourselves to communicating with each other in order to:

- **Understand each other better,**
- **Identify common problems, and**
- **Seek consensus solutions.**

LESSON #2:

Sustainable Communities are built on a 3-legged Stool



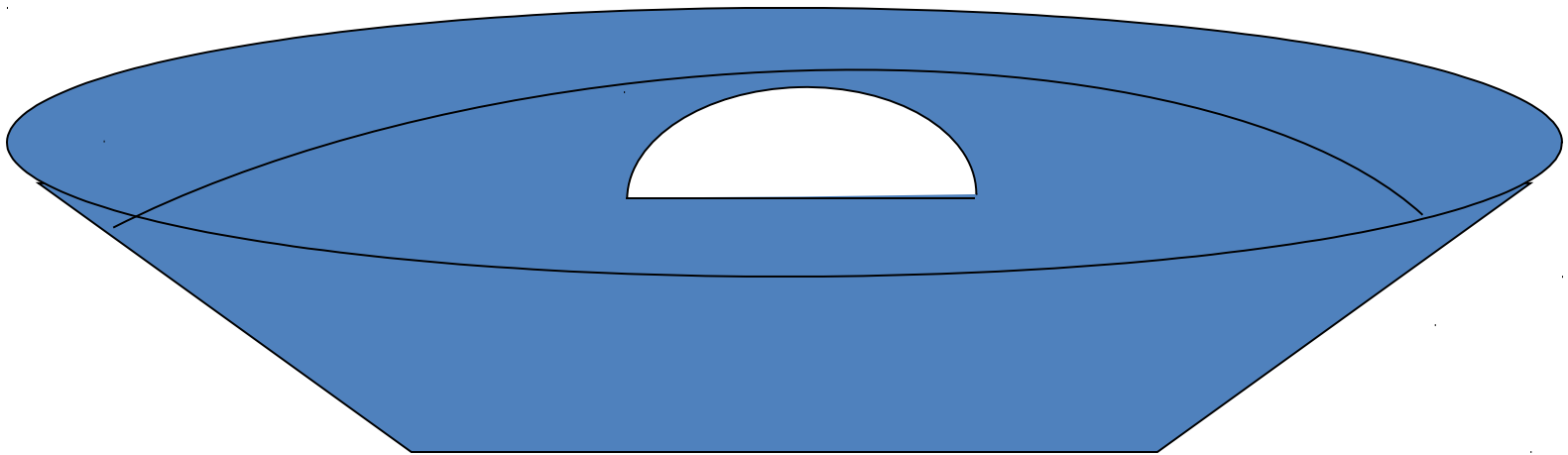
LESSON #3:
Nobody likes change
except those in diapers.



- * The only thing **CONSTANT** is **CHANGE**.
- * There's Dinosaurs, and there's coyotes.

LESSON #4:

**We don't progress
unless we push the edge
of conventional thinking.**



LESSON #5:

There's "solution-seekers", and there's "rock-throwers".

The Public Policy Spectrum

Waaaay Left

Waaaay Right



- * National interests
- * Policy books
- * Paid staff
- * Marketing Issues

- * Local interests
- * Personal Values
- * Volunteers
- * Solving Problems

- * National interests
- * Policy books
- * Paid staff
- * Marketing Issues

LESSON #6:

**There is REAL power in building
consensus
out of diversity.**

- **Public policy decisions WILL shape Colorado.**
- **WHO will make those policies?**

My Challenge to YOU:

- 1.Engage new neighbors, but preserve your culture.**
- 2.Pursue a quality of life that includes a healthy economy, environment and culture.**
- 3.Take advantage of change rather than trying to insulate yourself from it.**
- 4.Seek out diversity in all aspects except ONE – everyone at the table should be a solution-seeker.**
- 5.Dare to ask: “Why not?”**

Thank You!

Colo Dept of Local Affairs

Reeves Brown, Executive Director

303-866-4904

reeves.brown@state.co.us